

Installing ImagePrint 8 after downloading - Windows edition

Updated July 2009

These instructions assume you have downloaded the ImagePrint installer and have removed any current ImagePrint versions on your system. If you already have ImagePrint 7.0 installed, you may want to use the ImagePrint Updater utility instead, which will update ImagePrint to the latest version.

1. The downloaded file is a “zip” archive containing the installation files in compressed format. Double-click the file from its download location and a window will appear giving you the option of extracting the archived files. (Make sure to extract the files in this way--do not run the installer without first extracting it to a folder.) When done extracting, you will have a folder called “ImagePrint Downloadable Installer 7.0 for Windows”.

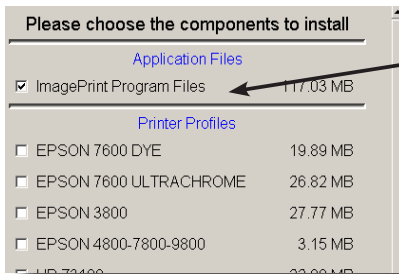


2. Double-click the “ImagePrint Downloadable Installer 8.0 for Windows” folder to open it, then double-click the file “Install.exe” to begin the installation.



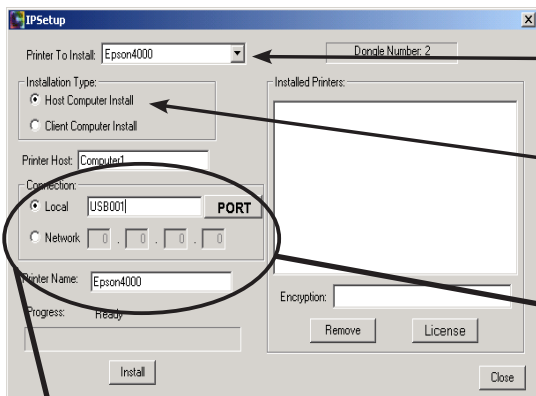
3. Click NEXT within the Installer window to proceed to the ColorByte License agreement.

Click the **Accept** button to accept the license.



4. In the next window, make sure that the top check button (Application files) is selected and click NEXT.

Since the downloadable installer has only a base set of printer profiles, it is not necessary to select any available printer profile checkboxes. Additional profiles can be downloaded later via the Profile Manager.



5. In the IP SETUP window that appears, select your printer model from the drop-down list next to **Printer To Install**.

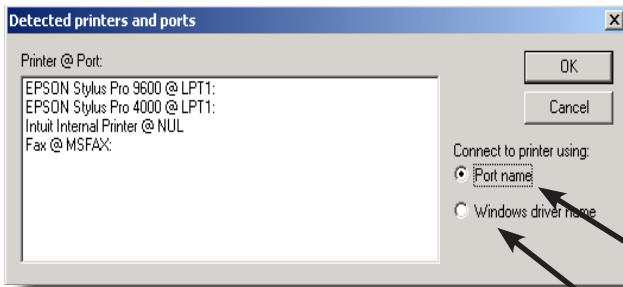
6. Keep **Host Computer Install** as the **Installation Type** unless you are printing from a client computer to an ImagePrint Host. (See the user’s manual for installation details in that case)

7a. **Ethernet Connection:** If your printer uses an **ethernet** connection, click **Network** and enter your printer’s IP address. (Check your printer manual on how to obtain the printer’s IP address if not sure.) *Skip to step 8 after entering the IP address.*

7b. **USB/Firewire** If your printer is connected to your computer via **USB** or **Firewire**, click **Local**. Then click the **PORT** button. The USB/Firewire Port selection window will appear (see next page)

Continued on next page

7b Firewire/USB connection (continued)



Choose the Printer Manufacturer's driver from the list on the left. (Very Important: Make sure it is the correct one. For Epson printers, the name STYLUS will appear in the name)

If using **USB**, choose the "Port Name" checkbox and click the OK button.

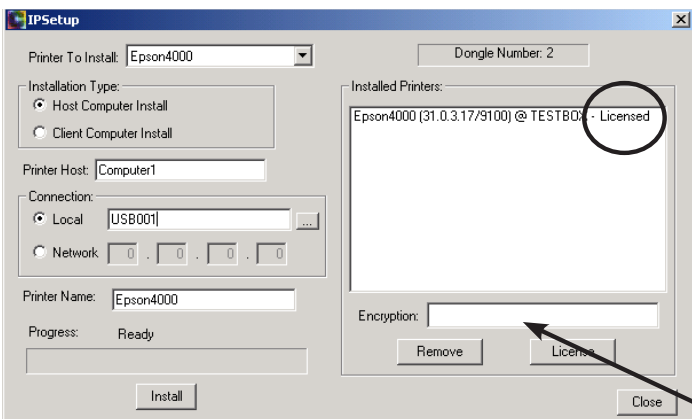
If using **Firewire**, choose the "Windows Driver Name" checkbox, and click the OK button.

Important: Firewire users will also need to right click the manufacturer's printer driver within Windows Printers and Faxes, choose Properties, and in the ADVANCED section, and select PRINT DIRECTLY TO PRINTER after completing the ImagePrint installation.

Click **OK** to close the Port Selection window.

8. Click **INSTALL**. When the installation is finished, you will be prompted to reboot the computer.

9. After rebooting, you will need to license your software (this is not necessary if planning to run in DEMO mode). Insert the dongle into one of your computer's USB ports or a powered USB hub. If you get a "New Hardware" found message, click Next to allow Windows to setup the dongle drivers (ignore any message regarding Windows compatibility testing).



10. Launch IP Setup from the desktop shortcut or by choosing ImagePrint from the ImagePrint Program group in your Start menu.

11. Your installed printer will be listed on the **RIGHT** side of the IP Setup window (please don't worry about the default entries on the left side). Make sure the 6 digit dongle number appears in the Dongle Number field.

12. Type your encryption number into the Encryption field and click LICENSE. *To obtain your encryption, follow the instructions in your 8.0 update email or on the back of your ImagePrint 8.0 CD case.*

13. The encryption has been successfully installed when the word "Unlicensed" changes to "licensed" beside the printer's name. Once licensed, click the X in the upper right corner of the window to exit.

ImagePrint is now installed!



Double-click on the ImagePrint icon on your desktop, or within the ImagePrint folder in your Program Files folder, to launch the application.

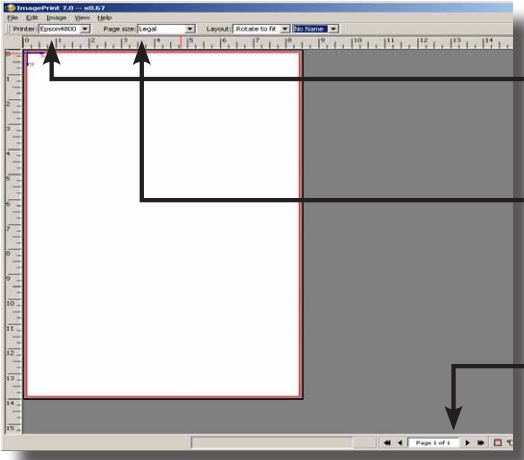
Making Your First Print with ImagePrint 8.0 - Windows edition

Updated July 2009

To verify your settings, its recommended that you make a test print after completing your ImagePrint installation. *Remember, detailed information for all functions can be found in the PDF manual, located in the folder where ImagePrint was installed.*



1. Launch ImagePrint by double-clicking its icon on your desktop (or choose ImagePrint from your Windows Start Menu within the ImagePrint program group). You may get a warning to select the right printer profile, which you can ignore for now.



2. Verify that the correct printer is selected in the upper left hand corner of the ImagePrint main window.

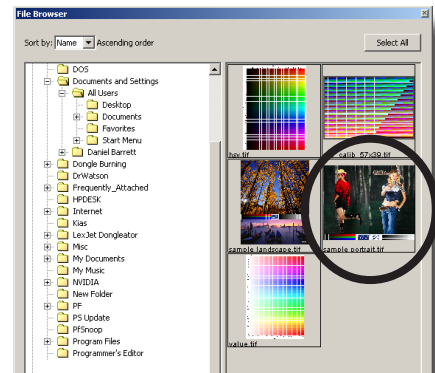
3. Choose your page size from the Page Size menu in the upper section of the ImagePrint window. For this example, a legal size page is selected. This setting is used to define the size of the physical paper loaded in the printer.

4. IMPORTANT! Choose SHEET or ROLL by clicking the Sheet/Roll icon in the lower right of the main window. (Hover your mouse over these icons to see descriptions to the left).

5. Open an image to print.

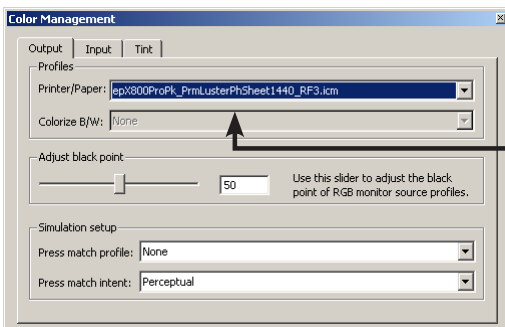
We recommend using one of the sample images that are automatically installed with ImagePrint. To open a sample image, choose "File Browser" from ImagePrint's VIEW menu. The ImagePrint File Browser will appear.

Use the File Browser to navigate to the folder called "Test Images" within the ImagePrint folder (the default location is c:\Program Files\ImagePrint.) Double-click the icon for the "Sample Portrait" image to open it in ImagePrint. *(If that image is unavailable, use another image in that folder, or try one of the Photoshop sample images located in its "Samples" folder if you have Photoshop.)* Once opened, you can position and/or size the image within the ImagePrint Layout Area by clicking and dragging it.



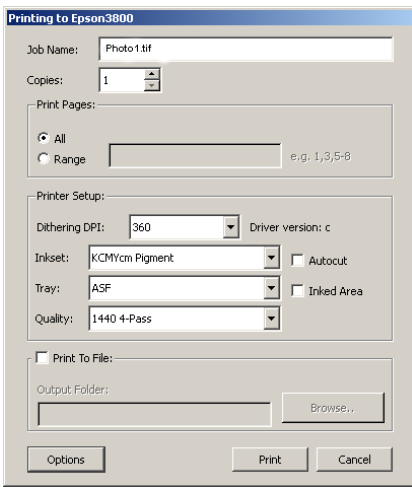
6. Pick a printer/paper profile.

It's vital to choose the right profile for the paper and printer in order to ensure accurate color reproduction.



- Open the Color Management window by choosing Color Management from the **IMAGE** menu at the top of the main window.
- In the Printer/Paper field of the Color Management window, choose a profile for your printer that corresponds to the paper you are using. (Important: Leave the **Press Match** field at NONE.)

Note: New paper profiles can be downloaded from ImagePrint's Profile Repository via the Profile Manager, which is installed in your Image Folder.



7. Print the File

Choose File from the main menu, and scroll down to Print. The Print Dialog Window will appear.

Most fields in this window should be left at their default setting, but...

- *If you are printing on sheet paper, choose between “ASF” (Automatic Sheet Feeder) or Manual*
- *If your printer supports it, paper cutting can be turned on or off by clicking the Autocut checkbox (Roll Paper only)*

Before clicking Print, you should click the OPTIONS button (if available) to set your Media Type. The Media Type activates presets on some printers that control paper feed settings--choose a paper that matches as closely as possible the paper you are using in overall thickness. (Some choices here may affect the ability of the printer to autocut, or to accept paper in the tray).

Click PRINT in the Print Dialog window to start the print.

Checking the Status of Your Print Jobs

Now let's check the status of your test print.

 Select the printer icon from the bottom of the floating toolbar. The Spool Face window will appear.

Your print job should have appeared in the top pane of the spoolface window. This is the ACTIVE pane. Jobs will stack up here, waiting their turn to print. When they are done, they will automatically move to the bottom pane (the *FINISHED* side). You can cancel a job by highlighting it and dragging it to the bottom (Finished) side.

From the Spool Face window you can view the status of all your print jobs. It will warn you if there is a problem connecting to the printer that requires your attention. The right side of the spoolface window gives a run status of all print jobs, and the bottom left corner shows the status of the queue. Verify that it reads Ready or Printing. If it shows PAUSED, restart the spooler by deselecting PAUSE from the QUEUE menu at the top of the screen. If it PAUSES again, there's a problem. Normally, you will see an error number next to the PAUSED status as well as in the status area on the right--check the Troubleshooting guide in your ImagePrint folder for common error codes.

DEMO / TRIAL behavior: By default, if the software is unlicensed, it will not print. You can change this behavior to have the software print with a DEMO watermark instead. Just choose “DEMO behavior” from the QUEUE menu at the top of the Spoolface window, and choose “Do Print in DEMO”. (While demo printing can occur without a software license has been entered, a dongle must still be attached. No printing will occur without a dongle attached even if “Do Print in DEMO” is selected. A dongle **MUST** be present for any printing to occur on the Windows version of ImagePrint).