

Quick Start Guide to Installing ImagePrint 8 - Windows edition

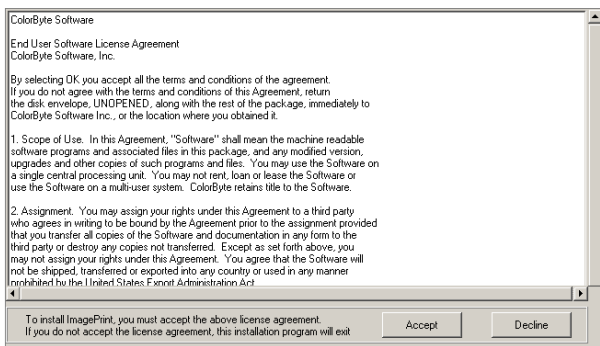
Updated April 2009

IMPORTANT: DO NOT INSERT THE USB DONGLE YET. THE SOFTWARE MAY NOT INSTALL PROPERLY IF THE STEPS ARE NOT FOLLOWED IN THE ORDER PRESENTED.

This Quick Start will guide you through the installation of ImagePrint. Full documentation for the software is included in PDF (Adobe Acrobat) form within the folder in which ImagePrint is installed, and will be accessible via an "ImagePrint Manual" link on your desktop after installing.

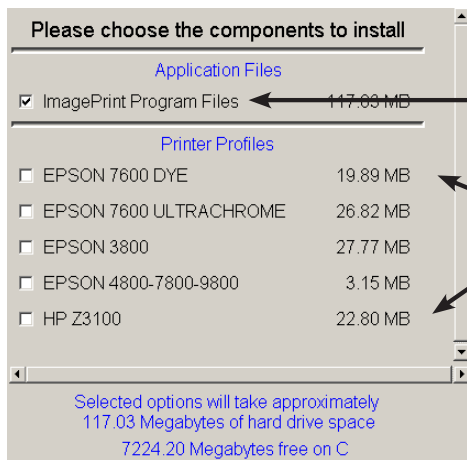
Before proceeding, verify that the printer is operating properly and that there is proper communication with the computer. For printers that lack Windows drivers supplied by the manufacturer, test prints and alignments can usually be performed from the control panel of the printer itself. See your printer manual for details.

1. Insert the **IMAGEPRINT** CD into your CD-ROM drive. The ImagePrint Installer will launch automatically.



2. Click **NEXT** within the Installer window to proceed to the ColorByte License agreement.

Click the **Accept** button to accept the license.

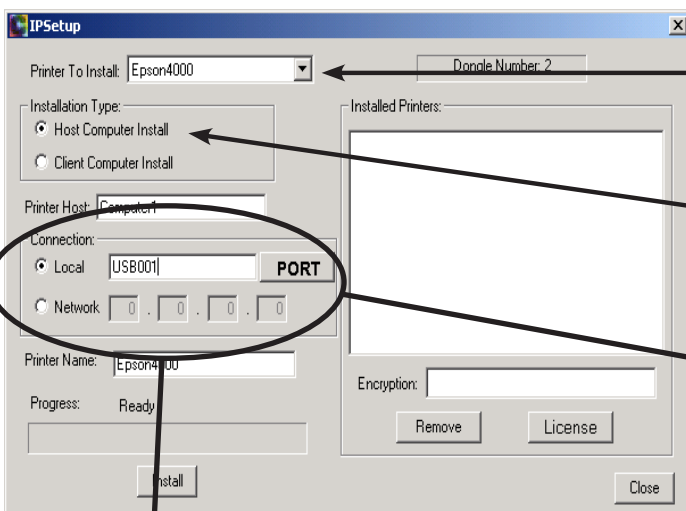


You now need to choose what components to install.

3. Make sure that the top check button (ImagePrint Program files) is selected.

4. To install the correct profiles, select the printer that you will use with ImagePrint. **CAUTION: Choose only the printer profiles for the printer(s) you plan to use--each printer has numerous profiles that can take up large amounts of hard drive space.**

5. Click **NEXT**.



The IP Setup window will appear.

6. Select your printer model from the drop-down list next to **Printer To Install**.

7. Keep **Host Computer Install** as the **Installation Type** unless you are printing from a client computer to an ImagePrint Host. (See the user's manual for installation details in that case)

8a. Ethernet Connection: If your printer uses an **ethernet** connection, click **Network** and enter your printer's IP address. (Check your printer manual on how to obtain the printer's IP address if not sure.) *Skip to step 9 after entering the IP address.*

8b. USB/Firewire If your printer is connected via **USB** or **Firewire**, first click **Local**. Then click the **PORT** button.

The USB/Firewire Port selection window will appear (see next page)

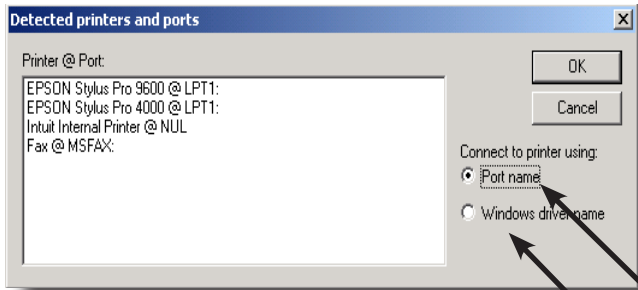
8b (continued)

In the USB/Firewire Port Selection window:

Choose the Printer Manufacturer's driver from the list on the left. (Make sure it is the correct one. For Epson printers, the name Stylus will appear in the name)

If using **USB**, choose the "Port Name" checkbox and click the OK button.

If using **Firewire**, choose the "Windows Driver Name" checkbox, and click the OK button.



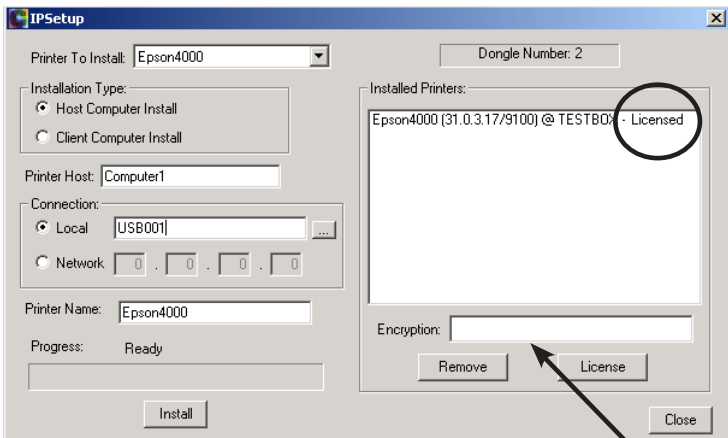
(**Important:** Firewire users will also need to right click the manufacturer's printer driver within Windows Printers and Faxes, choose Properties, and in the ADVANCED section, select PRINT DIRECTLY TO PRINTER after completing the ImagePrint installation.)

Click **OK** to close the Port Selection window.

9. Click **INSTALL**. When the installation is finished, you will be prompted to reboot.

10. After rebooting, you will need to license your software (this is not necessary if planning to run in DEMO mode). Insert the dongle into one of your computer's USB ports or a powered USB hub. If you get a "New Hardware" found message, click Next to allow Windows to setup the dongle drivers (ignore any message regarding Windows compatibility testing).

11. Launch IP Setup from the desktop shortcut or by choosing it from the ImagePrint Program group in your Start menu, or by launching it directly from the ImagePrint folder.



12. Your installed printer will be listed on the **right** side of the IP Setup window (don't worry about the default entries on the left side).

In order to accept your encryption, your dongle number **must** appear in the Dongle field. This number should normally be 6 digits long and will match the number printed on your dongle. *If zero appears, the dongle has not been properly installed. Make sure the dongle is plugged in to an active USB port.*

13. Type your encryption number in to the Encryption field and click LICENSE.

Note: To obtain your encryption via email, go to www.colorbytesoftware.com/getcode.php, and enter your login id and dongle number in the fields provided. (The login ID and dongle number appear on the back side of your software package, or, if you downloaded the software, can be found in the emailed download instructions you received from ColorByte.)

14. The encryption is successfully installed when the word "Unlicensed" changes to "Licensed" beside the printer's name. Once licensed, click the X in the upper right corner of the window to exit.

ImagePrint is now installed!



Double-click on the ImagePrint icon on your desktop, or within the ImagePrint folder in your Program Files folder, to launch the application.

Further Documentation: The ImagePrint PDF manual is located in the ImagePrint folder or by choosing Manual from the ImagePrint Help menu. The Troubleshooting guide is also located in the ImagePrint folder, or by choosing Troubleshooting from the ImagePrint Help menu.