

# Quick Start Guide to Installing ImagePrint 8.0 - Mac OSX edition

Updated April 2009

Before proceeding, verify that the printer is operating properly and that your printer is properly connected to the computer. Also, if you have installed a previous copy of ImagePrint on your computer, you should remove it by dragging the **ImagePrint** folder from the Applications folder to the trash, and then emptying the trash.

1. Insert the USB dongle into a free USB port. *(If running the DEMO version of ImagePrint, this step is not necessary).* **The dongle should be in place whenever you use ImagePrint. It is the most important part of the product, and cannot be replaced if lost or stolen.**

*If installing from downloaded version of Imageprint instead of from a CD, skip to step 4.*

2. Insert the ImagePrint CD-ROM into your CD drive.

3. Double click on the icon of the IMAGEPRINT CD once it appears on the desktop.

4. Double click on the Installer. Follow the on screen instructions.

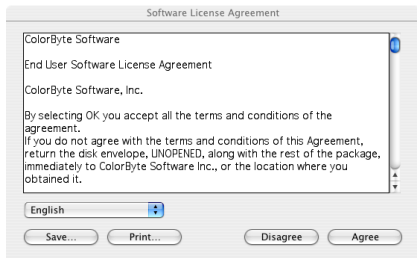
The Authenticate window will appear. This is a function of OSX and its built-in security measures and is not part of the IMAGEPRINT software.



NOTE: You must enter your unique Macintosh Login name and password in the boxes provided.

Click OK.

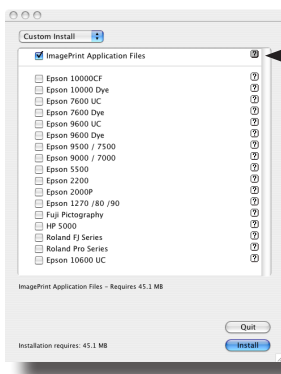
If an “Installer Maker” window appears, click “Continue”



5. Read the license agreement.

6. Click Agree to accept and continue with the installation.

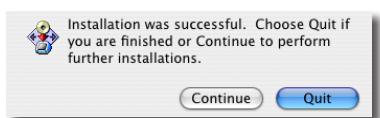
*If using a downloaded version of Imageprint instead of a CD, skip to step 10.*



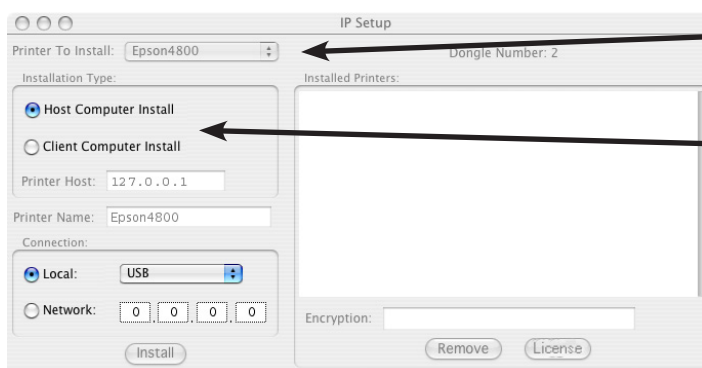
7. Important: Click the box next to **ImagePrint Application Files** to select it.

8. Click the box next to the printer(s) profiles that match your printer type.

9. Click Install.



When you see this window Click Quit. The IP Setup window will appear.



10. Select your printer from the drop-down list.

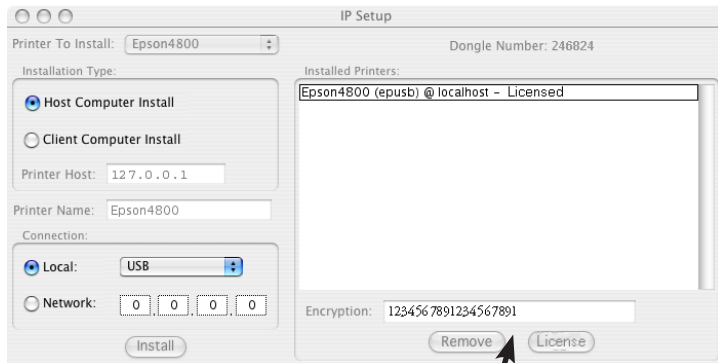
11. If you're using one computer and one printer, Choose Host Computer Install as the **Installation Type**. If you have multiple printers and computers you should refer to the complete User's manual for detailed instructions.

12a. For **USB** or **Firewire** connections, Click Local in the Connection section of this window and select the proper type from the drop-down list.

12b. For **ethernet** connections, click Network in the Connection section of this window and enter your **printer's** IP address. (Your printer manufacturer provides information on finding your particular printer's IP address if you don't already know it).



13. Click **Install**.



14. After installing, you need to license your software. (Note: this step is not necessary if you plan to run ImagePrint in DEMO mode).

In order to accept your license, your dongle must be attached to a USB port on your computer (or hub) and the 6 digit dongle number must appear in the DONGLE NUMBER field of IP Setup. (If zero appears, the dongle has not been properly installed. Make sure the dongle is plugged in to an active USB port and restart the IP Setup utility from the /applications/ImagePrint folder).

15. Type your encryption number into the field provided

*If you do not have your ImagePrint encryption number, you can get it from our internet server. The back of your cd case has details and the necessary login codes. Make sure that no email spam filters are in effect that might block the response email from being received on your system.*

16. Click the **License** button.

17. The encryption has been successfully installed when the word "Unlicensed" changes to "Licensed" at the end of the Installed Printer entry. If it does not show Licensed, you may have mistyped the code and should re-enter it and click License again.

*If LICENSED does not appear, and there are no error messages, try deleting the file "ip\_auth" from the /applications/ImagePrint folder, then enter your encryption again.*

18. Choose Close to exit this dialog box.

ImagePrint is now installed!

You may now double-click on the ImagePrint icon from its location in the /Applications/ImagePrint folder to launch the application. (You may wish to drag the ImagePrint application icon to your Macintosh Dock for convenience).

## Further Documentation

The full ImagePrint PDF manual is located in the ImagePrint folder and can be accessed by choosing Manual from the ImagePrint Help menu. It describes all ImagePrint features, and is a valuable reference for getting the most out of your software.

A troubleshooting guide is available by choosing TroubleShooting from the Help menu. Most problems encountered with ImagePrint can be resolved by referencing this guide.